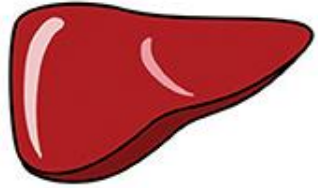


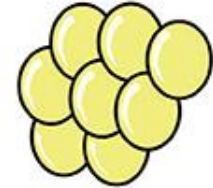
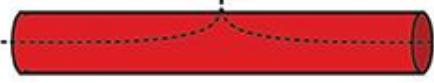
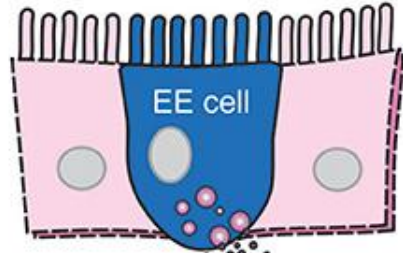
5-HT:  
 ↑ gluconeogenesis,  
 ↓ glucose uptake

GLP-1:  
 ↓ hepatic glucose output

INSL5:  
 ↓ hepatic glucose output



Liver



Adipose

5-HT:  
 ↑ lipolysis,  
 ↓ adiponectin

Ghrelin:  
 ↑ lipogenesis

GIP:  
 ↑ lipid uptake,  
 ↓ lipolysis

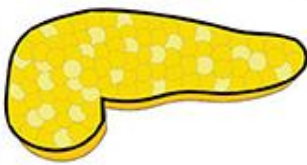
GLP-1: ↑ GSIS, β-cell mass

GIP: ↑ GSIS, β-cell mass,  
 insulin synthesis &  
 glucagon secretion

OXM: ↑ GSIS

PYY: ↑ GSIS  
 (islet-derived)

Ghrelin: ↑ glucagon secretion  
 ↓ insulin secretion



Pancreas



Bone

5-HT:  
 ↓ bone turnover  
 ↓ osteocalcin synthesis